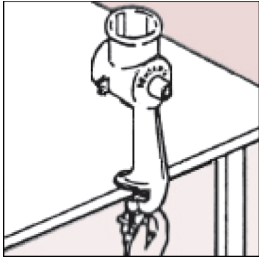
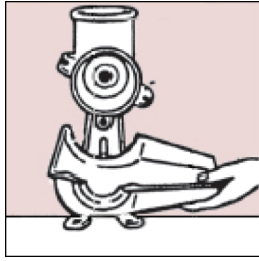


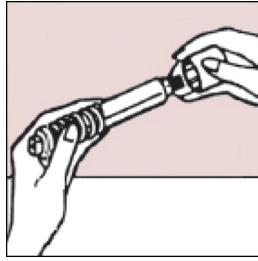
Original All-Metal Squeezeo & Squeezeo Deluxe* Instructions



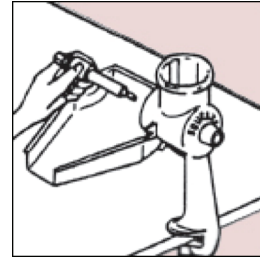
1. Clamp housing to table.



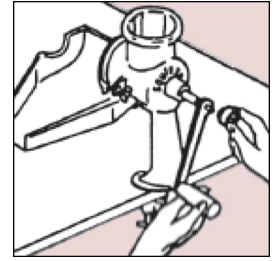
2. Insert the drain tray.



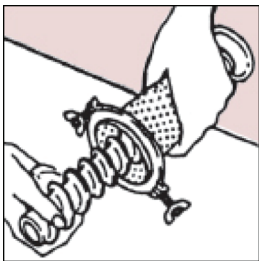
3. Drive shaft-spring-ferrule (ferrule partially covers the spring).



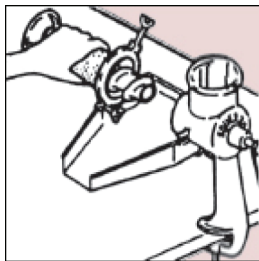
4. Clamp housing to table.



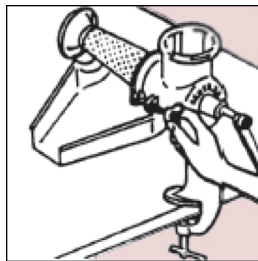
5. Attach the handle to the drive shaft with the wing nut.



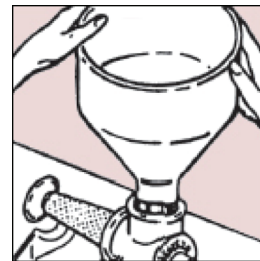
6. Insert the scroll into the screen.



7. Center the screen to the housing and fit the scroll onto the drive shaft (pull drain tray out slightly to position screen and scroll).



8. Tighten wing nuts evenly (do not overtighten). If rubbing occurs, loosen wing nuts slightly and adjust screen position.



9. Insert the hopper.

Before Use

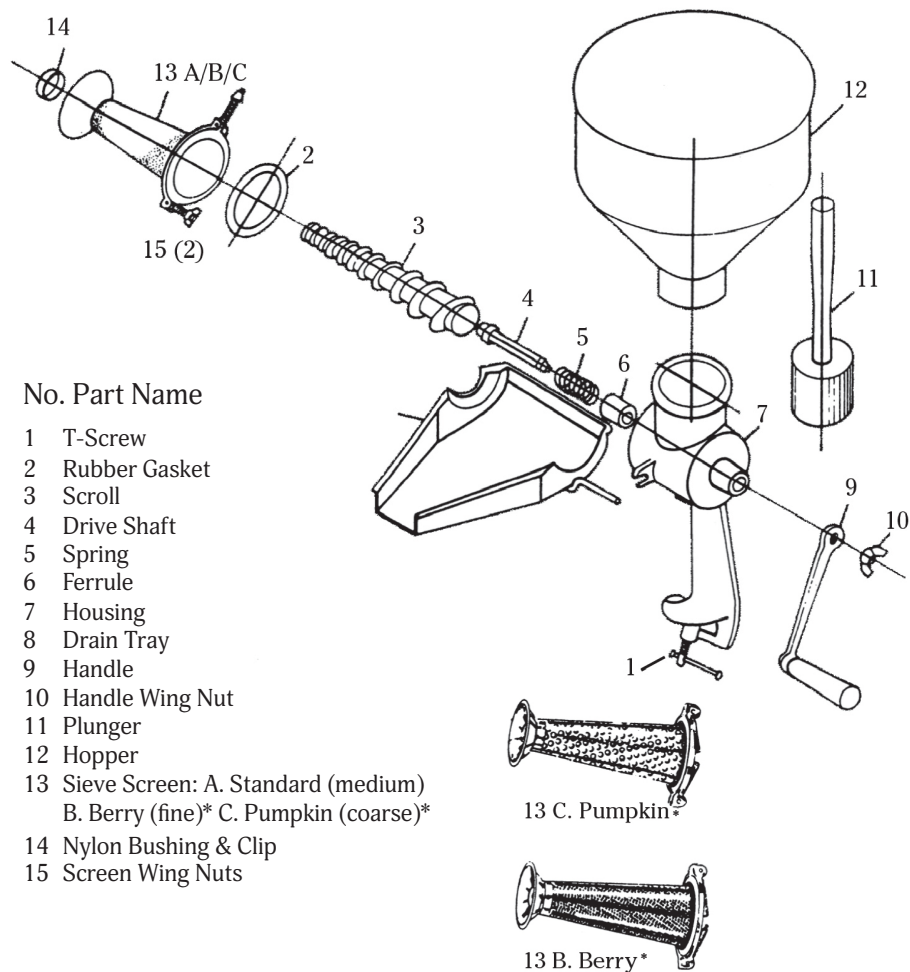
Because the spiral is cast some imperfections will wear off during the first run in the form of metal shavings. Use stale bread with olive oil or older tomatoes with olive oil as a first run, discard the batch and clean the machine. For assembly, follow figures 1 through 9.

To Use

- Do not put hot food into the Squeezeo. Let hot food cool first!
- Fill the hopper only about half full and press down with the plunger while turning the handle clockwise.
- If skins seems too wet, run them through again.

When You're Done

Dissassembly is the reverse of assembly. Wash all parts in soapy water (not in the dishwasher) and dry thoroughly. If storing strainer, coat the metal pieces with olive oil prior to storage. The gasket and nylon bushing in the screen will wear with use and can be replaced easily using the available Screen Renew Kit.



No. Part Name

- 1 T-Screw
- 2 Rubber Gasket
- 3 Scroll
- 4 Drive Shaft
- 5 Spring
- 6 Ferrule
- 7 Housing
- 8 Drain Tray
- 9 Handle
- 10 Handle Wing Nut
- 11 Plunger
- 12 Hopper
- 13 Sieve Screen: A. Standard (medium)
B. Berry (fine)* C. Pumpkin (coarse)*
- 14 Nylon Bushing & Clip
- 15 Screen Wing Nuts



13 C. Pumpkin*



13 B. Berry*